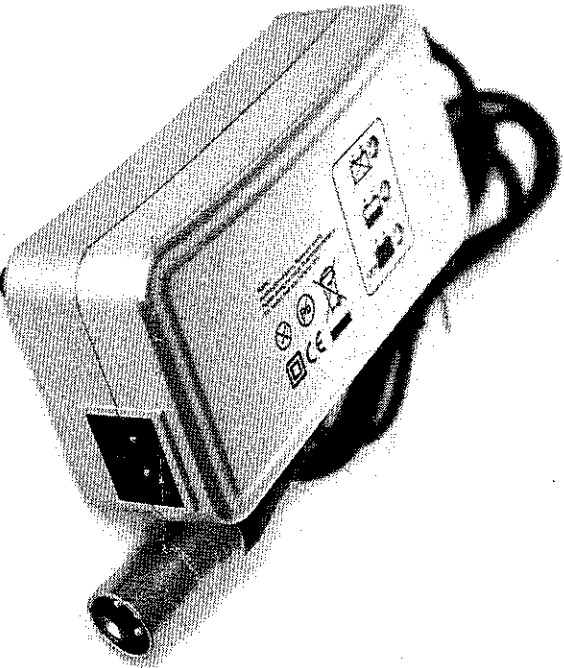


MK Battery - TPS-CH24-1,5 - ML24/1.5 (1.5 Ampere)
with Neutrik NC3MX 3pin XLR-connector (male)

May 13th, 2016



LED-indication

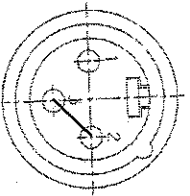
Green blinking:	AC on, no battery connected
Green on (constantly):	Battery charged completely
Yellow on (constantly):	Charging
Red on (constantly):	Inverse polarity

Caution:

Please do not operate the device near heat sources.
Please only operate the device in dry and ventilated rooms.
The device may only be maintained by trained personnel.
Please do not modify the output cable and connector.

The charger starts charging automatically when the battery is connected and AC-power is connected.

1. Charging stage: 28,8V
2. Trickle charging, hysteresis curve



Pin 1: + 24 V (red)
Pin 2: - (black)
Pin 3: - (black)

View: Connection side
(front), not solder side