

**battery type:** Lithium Button Cell  
**battery size:** CR2477  
**chemical system:** Lithium Manganese Dioxide

**Conditions**

**nominal voltage:** 3.0 V  
**open circuit voltage:** 3.0...3.4 V (new battery)  
 2.9...3.4 V (after 1 year storage at 20°C)

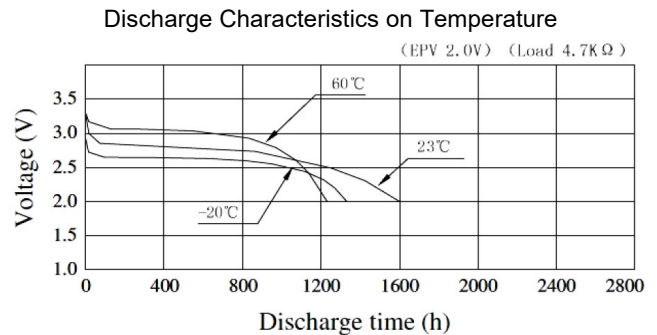
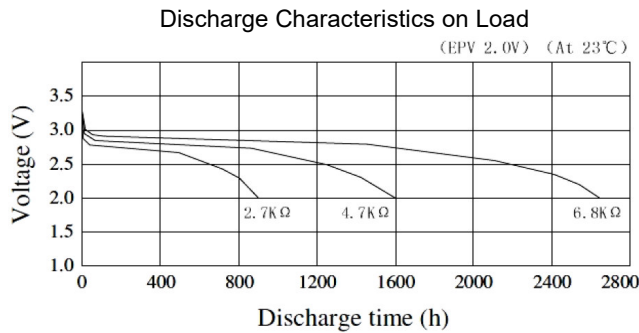
all measurements at 22 ± 2°C ambient

**capacity rated:** 1000 mAh (continuous discharge at 4.7kΩ load; 24hours/day End Voltage (EV): 2.0V)  
**minimum:** 900 mAh (continuous discharge at 4.7kΩ load; 24hours/day EV: 2.0V)

**standard discharge time minimum:** 155 h (at 680Ω load (for QC measurement) EV: 2.0V)

**discharge currents standard:** 0.2 mA  
 max. recommended current under continuous discharge: 6 mA  
 max. recommended current under pulse discharge: 30 mA

**discharge diagrams:**

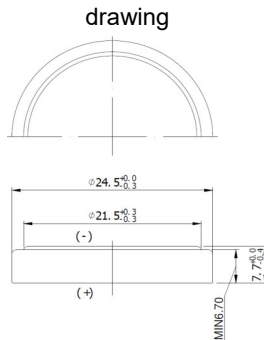


**shelf life:** 10 years under proper storage conditions (ta: ≤ 22°C; RH: 60 ± 15%)  
**self-discharge:** ≤ 2 % per year (at 20°C ambient temperature)

**operating temperature range:** - 20...70 °C  
**storage temperature:** 0...30 °C (recommended)

**mechanical specifications:**

outer battery dimensions  
 diameter: 24.5mm +0/-0.3mm  
 height: 7.7mm +0/-0.4mm



printed production date 4 digits (YYMM)  
 e.g. 1806 = 2018 June

**nominal weight:** 10.5 g (approx.)

	<b>ANSMANN Specifications for model:</b>	<b>Lithium Button Cell CR2477</b>
	data sheet no. / part no.	
	supplier no.	704080
	author / date	TG / 07.10.2019